



## THE ANNIVERSARY 2.1



### THE ANNIVERSARY 2.1 Model number: 25ANN28563AH19

**3 beds • 2 baths • 1568 sq.ft. • 28' width • 56' depth**

Our home building facilities invest in continuous product and process improvements. Plans, dimensions, features, materials, specifications and availability are subject to change without notice or obligation. Renderings and floor plans are representative likenesses of our homes and may differ from the actual homes. We invite you to tour a Home Center near you and inspect the highest value in quality housing available or call (606) 528-6114 to speak with a Home Consultant. Copyright 2017, CMH. All rights reserved.

<https://www.claytonhomesofcorbin.com>

### CLAYTON HOMES-CORBIN

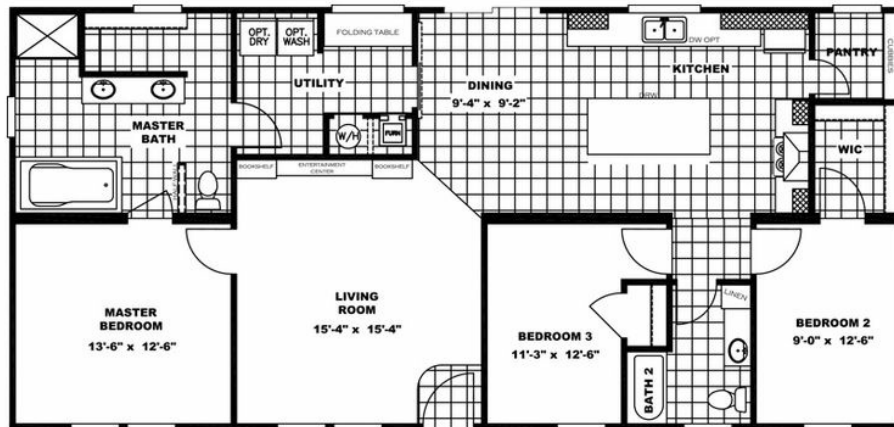
22 PARK HILLS ROAD  
CORBIN, KY 40701

Monday - Thursday: 9am to 6pm  
Friday: 9am to 6pm  
Saturday: 9am to 5pm  
Sunday: Closed

(606) 528-6114



# THE ANNIVERSARY 2.1



## THE ANNIVERSARY 2.1 Model number: 25ANN28563AH19

**3 beds • 2 baths • 1568 sq.ft. • 28' width • 56' depth**

Our home building facilities invest in continuous product and process improvements. Plans, dimensions, features, materials, specifications and availability are subject to change without notice or obligation. Renderings and floor plans are representative likenesses of our homes and may differ from the actual homes. We invite you to tour a Home Center near you and inspect the highest value in quality housing available or call (606) 528-6114 to speak with a Home Consultant. Copyright 2017, CMH. All rights reserved.

<https://www.claytonhomesofcorbin.com>

### CLAYTON HOMES-CORBIN

22 PARK HILLS ROAD  
CORBIN, KY 40701

Monday - Thursday: 9am to 6pm  
Friday: 9am to 6pm  
Saturday: 9am to 5pm  
Sunday: Closed

(606) 528-6114